

Byte Software Product & Pricing Interface

This NYLX integration supports BytePro Standard, BytePro Enterprise and BytePro Online.

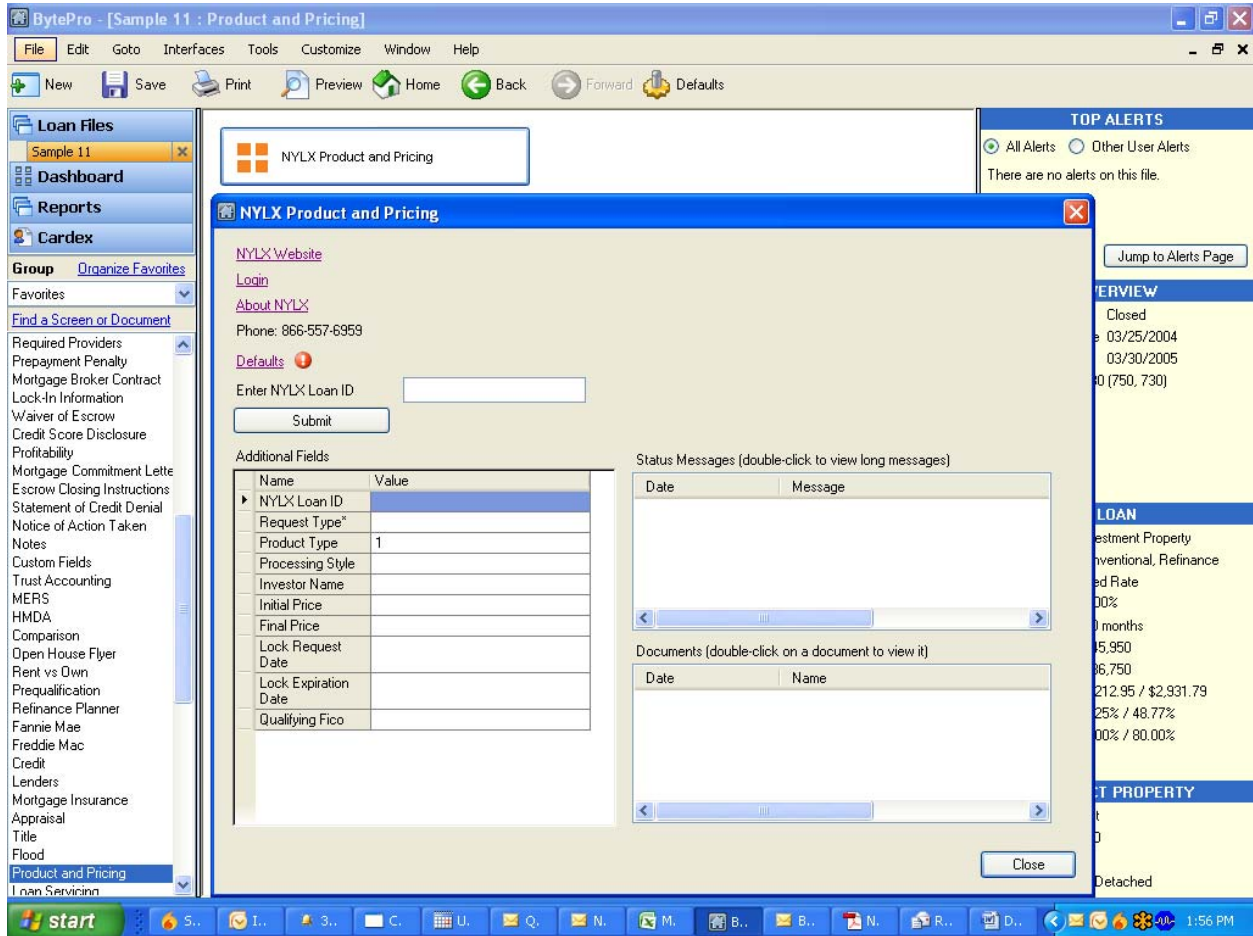
Please see the screen shots below showing the NYLX Interface in BytePro:

The screenshot displays the BytePro application window titled "BytePro - [Sample 11 : Product and Pricing]". The interface is divided into several sections:

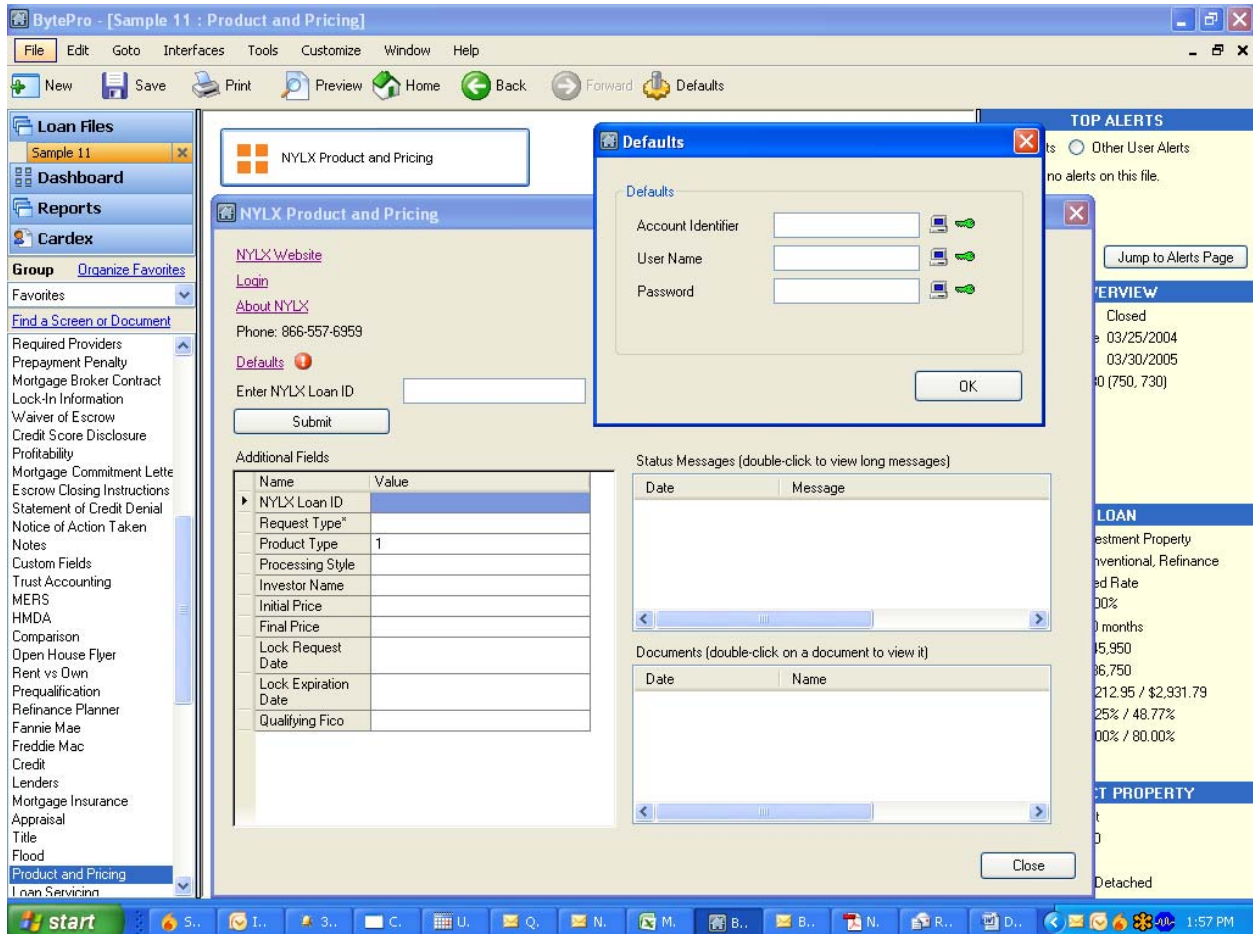
- Left Navigation Panel:** Contains "Loan Files" (Sample 11), "Dashboard", "Reports", and "Cardex". Below these are "Group" and "Favorites" sections, and a "Find a Screen or Document" search bar. A list of document types is visible, including "Required Providers", "Prepayment Penalty", "Mortgage Broker Contract", "Lock-In Information", "Waiver of Escrow", "Credit Score Disclosure", "Profitability", "Mortgage Commitment Letter", "Escrow Closing Instructions", "Statement of Credit Denial", "Notice of Action Taken", "Notes", "Custom Fields", "Trust Accounting", "MERS", "HMDA", "Comparison", "Open House Flyer", "Rent vs Own", "Prequalification", "Refinance Planner", "Fannie Mae", "Freddie Mac", "Credit", "Lenders", "Mortgage Insurance", "Appraisal", "Title", "Flood", "Product and Pricing", and "Loan Servicing".
- Main Content Area:** Displays a box labeled "NYLX Product and Pricing".
- Right Sidebar:**
 - TOP ALERTS:** Includes radio buttons for "All Alerts" (selected) and "Other User Alerts". A message states "There are no alerts on this file." with a "Jump to Alerts Page" button.
 - OVERVIEW:** Shows loan status as "Closed", scheduled closing date as "03/25/2004", lock expiration as "03/30/2005", and credit score(s) as "730 (750, 730)". Links for "Francis Sample" and "Frank Sample" are provided.
 - LOAN:** Lists details such as "Occupancy: Investment Property", "Loan Type: Conventional, Refinance", "Loan Program: Fixed Rate", "Interest Rate: 4.500%", "Term: 360 months", "Price / Value: \$545,950", "Loan Amount: \$436,750", "P & I / PITI: \$2,212.95 / \$2,931.79", "DTI Ratios: 17.25% / 48.77%", and "LTV: 80.00% / 80.00%".
 - SUBJECT PROPERTY:** Lists "2234 45th Ave East", "Kirkland, WA 00000", "Appraised Value", and "Property Type: Detached".

The Windows taskbar at the bottom shows the Start button, system tray icons, and the time "1:56 PM".

This screen shows the User's Interface:



The user and password information are entered into the Defaults section and encrypted for security. Once entered, it is stored and automatically sent to by-pass the log-in screen when requesting data.



6/1/09